

# Annual Review 2007 of Namutamba Rehabilitation Centre



# **Table of Contents**

## **1. Introduction**

## **2. Structure of Namutamba RC**

## **3. Reports from Departments**

## **4. Highlights**

## **5. Looking back on 2007**

## **6. Goals for 2008**

## **7. Finances**

## **8. Networking with other Organizations**

### **Abbreviations:**

CBR - Community Based Rehabilitation

PWD - People with Disability

NRC - Namutamba Rehabilitation Centre

VM - Voluntary Mediator

MOH- Ministry of Health

# **1. Introduction**

Namutamba Rehabilitation Centre (NRC) is providing services for children/ people with disabilities up to 25 years of age in Mityana Diocese (Kiboga, Mityana and Mubende District). It was opened in 1994. The RC is now working under the Church of Uganda with support from Neukirchener Mission (Germany).

## **Mission of the NRC**

- To provide medical rehabilitation while placing the Gospel of Jesus Christ as saviour at the centre of all services.
- The degree of rehabilitation shall be in accordance with the Ministry of Health and standards in Uganda.
- Services shall be provided to people of all communities, nationalities, religions and status without discrimination.

## **Objectives of the NRC**

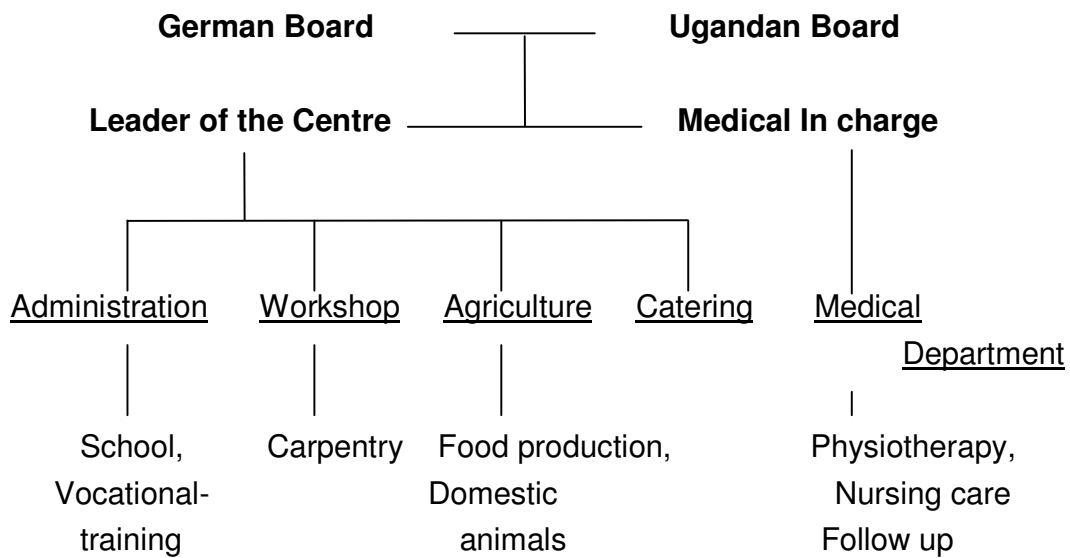
- To provide medical rehabilitation and therapeutic gears to children with disabilities.
- To involve the parents in the rehabilitation process.
- To create awareness and responsibility in communities in regard to PWD's.

## **Following Services are offered**

- Admission of children with Polio, Cerebral Palsy, Congenital deformities, Osteomyelitis, Cleft lips, Hydrocephalus, Post burn contractures, Drop foot and other disabilities
- Counselling
- Taking children to hospitals and specialists and if needed for operations
- Provision and production of therapeutic gears
- Pre- and postoperative care (dressings) and Physiotherapy
- Distribution of Epilepsy drugs
- Informal school activities
- Sending PWD's for vocational training
- Fieldwork: follow up and home visits, community awareness, identifying PWD's, training of VM's, regular Outreach clinics



## 2. Structure of Namutamba RC



## **3. Report from Departments**

### **3.1 Administration**

- 10 employed staff, supported by 2 medical staff from Germany
- Staff development:
  - Employment of a Daymatron
  - PWD's were considered first in recruitment of staff
- Training of 5 PWD's in tailoring and carpentry at Kireka Rehabilitation Centre and Dickson's tailoring school
- New office furniture
- Improvement on rehabilitation facilities, children's and staff rooms
- Salary increase for all staff members
- Staff trip to Bujjagali Falls (Jinja)
- Kids trip to the Zoo in Entebbe

#### **Challenges:**

- Increasing costs of living in Uganda
- The German Nurse left Namutamba RC in May 2007 and continues her contract in Shunga (TZ)
- NRC is depending on donations from Europe
- Transport is becoming costly

### **3.2 Medical Department**

#### **Achievements:**

- Internal training for medical staff
- The number of children rehabilitated/ operated has increased, while the admission period has been reduced
- Government support for medical services (Pull and Push and PHC)
- Effective treatment due to continuous provision of medicine
- Availability of a community room for Outreach Clinics
- One intensive course for further training of the VMs took place

#### **Challenges:**

- Transport of clients
- Fieldwork
- The German Nurse left Namutamba RC in May 2007 and continues her contract in Shunga (TZ)

### Number of clients for rehabilitation 2004- 2007

<b>Average</b>	<b>2004</b>	<b>2005</b>	<b>2006</b>	<b>2007</b>
<b>Inpatients</b>	35	30	29	<b>27</b>
<b>Attendants</b>	12	9	8	<b>8</b>
<b>Outpatients monthly</b>	203	229	223	<b>223</b>
<b>Outpatients annual</b>	2436	2746	2676	<b>2674</b>
<b>Operations</b>	86	130	166	<b>175</b>
<b>New clients</b>	655	599	529	<b>530</b>
<b>Vocational training</b>	10	14	5	<b>5</b>

### Number of new assessed clients treated in 2004- 2007

<b>Type of disability</b>	<b>2004</b>	<b>2005</b>	<b>2006</b>	<b>2007</b>
<b>CP(Cerebral Palsy)</b>	91	96	80	<b>78</b>
<b>Epilepsy</b>	236	201	204	<b>199</b>
<b>Osteomyelitis</b>	25	41	35	<b>37</b>
<b>Cleft lip, Cleft palate</b>	14	12	15	<b>15</b>
<b>Clubfoot</b>	41	22	17	<b>15</b>
<b>Post Burn Contracture</b>		14	8	<b>13</b>
<b>Others</b>	260	225	218	<b>173</b>
<b>Total</b>	667	611	577	<b>530</b>

### Epilepsy Programme

- Namutamba RC is running a programme for clients with epilepsy.
- Main goals are:
  - Education about the disease (for clients, communities, schools)
  - Provision of anti-epileptic medicine
  - Monitoring clients on long- term basis

### Number of Clients on anti-epileptic drugs

	2005	2006	2007
<b>Namutamba</b>	62	46	<b>58</b>
<b>Kassanda</b>	88	94	<b>100</b>
<b>Kiganda</b>	111	82	<b>119</b>
<b>Zigotti</b>	32	34	<b>49</b>
<b>Kyakatebbe/ Kakungube</b>	65	55	<b>51</b>
<b>Maanyi</b>	45	54	<b>63</b>

- Regular Epilepsy-Clinics are held every Friday at Namutamba RC.
- Outreach Clinics are held every 8 weeks in; Kakungube, Kyakatebbe, Kassanda, Kiganda, Maanyi.
- Clients are requested to pay a fee of 1500 Ush (medicine for 2 months)
- Mityana District is supporting the Outreach Clinics in providing professional assistance (Psychiatric Nurse).
- Voluntary Mediators are mobilising for the Outreach Clinics and educating the communities.
- We thank the MOH and Mityana District for providing Primary Health Care funds, which enabled the Centre to cover partly the expenditures for the Epilepsy programme.

### **3.3 Fieldwork and Follow up**

**Fieldwork is supporting following targets of the Centre:**

**To provide rehabilitation services to PWD's in 2 Districts**

- Outreaches
- Follow up programme for discharged clients
- VM's training and supervision (41 VM's are trained)

**To provide CBR in Mityana District**

- Awareness rising in schools and communities
- Organising community meetings to focus on needs of PWD's
- Teaching community leaders and parents

**Achievements:**

- 1 intensive Refresher Courses took place
- Raising awareness at Health Centres in regard to Drop foot and giving out flyers

**Challenges:**

- large area to cover
- some clients move their homes and are difficult to find
- the VM's at outreach places are still in need of further training

### **3.4 Workshop**

#### **Goals:**

- to provide adequate therapeutic gear for the Centre (crutches, walking frames, toilet seats, CP-chairs)
- to teach young people with disabilities skills in carpentry
- to supply the community with products, as ordered (coffins, tables, beds, doors, windows and others)

#### **Income / Expenditure:**

The Salaries for the Carpenters and electricity is excluded in the expenditures!

<b>Average</b>	<b>Income</b>	<b>Expenditure</b>
<b>Monthly</b>	<b>82.400/=</b>	<b>163.800/=</b>
<b>Annual</b>	<b>906.500/=</b>	<b>1.801.700/=</b>

#### **Challenges:**

- less orders from the community
- needs much financial support from NRC
- NRC could not find a carpenter who leads the workshop. The German Board decided to close the carpentry temporary in December 2007.

### **3.5 Agriculture Department**

We grow maize, sweet potatoes, matoke, onions, carrots and different types of fruits (pineapples, bananas, passion fruits,...).

Attendants and older PWD's are actively involved in gardening.





### **3.6 Education**

All children have the opportunity to go to school while they are on rehabilitation at the Centre. There are classes in the morning and afternoon lessons as well. All children are involved in home management and general cleaning.

The goal is to integrate PWD's in all activities of daily living.

Our nursery teacher attended further studies (Diploma in nursery teaching) with the support of NRC and will graduate in 2008.



morning lessons



...sports in the afternoon...



## **4. Highlights of 2007**

- 1 intensive Volunteer Mediator Courses took place in January.
- We created an office for PWD's downstairs.
- A trained carpenter worked on voluntary basis in our workshop for some weeks.
- Our dormitory has mosquito nets.
- Salary rise for all staff members.
- New water tank at the former carpentry.
- NRC employed a day matron.

## **5. looking back on 2006**

Our achieved goals of last year:

1. to provide an accessible office for PWD's
2. shifting and renovation of the Physiotherapy room and a room to admit our clients
3. to provide an accessible room for the night matron
4. to create more storage for medication and cleaning utility
5. mending the roof of the main building
6. to connect and optimize the water system
7. roofing of the playground
8. further training for our medical staff
9. language training for German staffs

still in progress:

10. attending a management course for the leader of NRC

## **6. Goals for 2008**

1. **staff house gets their own water tank**
2. **employ an Occupational Therapist for the fieldwork**
3. **regular health education (for children, attendants and the communities)**
4. **renew the mosquito nets at all windows**
5. **further training (CTEV course and Bobath course) for medical staffs**
6. **intensive courses for VMs on Outreach places**

## **7. Finances**

### **Balance Sheet 2007**

<b>Month</b>	<b>Income in Ush</b>	<b>Expenditure in Ush</b>
January	6.628.000	6.283.560
February	6.786.200	7.756.150
March	9.039.150	4.855.900
April	6.556.400	7.323.300
May	8.865.400	8.774.650
June	11.720.200	8.449.900
July	5.260.300	7.651.550
August	3.687.500	5.447.050
September	7.231.000	5.051.050
October	4.996.000	7.509.980
November	7.015.600	7.256.150
December	5.800.200	5.819.600
<b>Total</b>	<b>83.585.950</b>	<b>82.178.840</b>

### **Budget 2008**

<b>Expenditures</b>	<b>monthly in Ush</b>	<b>annually in Ush</b>
Costs of living/ food	1,200,000	14.400,000
Transport	1,000,000	12,000,000
Administration	300,000	3,600,000
Staff Costs	1,800,000	21,600,000
Maintenance	300,000	3,600,000
Medical Costs	1,000,000	12,000,000
Appliances and Operations (SLF)	1,600,000	19,200,000
Fieldwork and Follow up	600,000	7,200,000
Agriculture	100,000	1,200,000
Staff development	100,000	1,200,000
Others	200,000	2,400,000
<b>Total</b>	<b>8,200,000</b>	<b>98,400,000</b>

### **Expected Income:**

	<b>monthly in Ush</b>	<b>annually in Ush</b>
Neukirchener Mission Germany	4,500,000	54,000,000
SLF		20,000,000
PHC Mityana District		8,000,000
Pull and Push		2,100,000
Parent Contribution		4,500,000
Special donation from Europe		10,000,000
<b>Total Expected Income:</b>		<b>98,600,000</b>

Namutamba RC is a non-governmental and non-profit making organisation and relies on donations.  
We appreciate any contribution in supporting the work of the Centre.

**Bank Account at Stanbic Bank Ltd:**

**Account–No:** 0121 064 259 901  
**Branch:** Stanbic Bank of Uganda Limited,  
Kampala Road, Kampala  
**Name:** Namutamba Rehabilitation Centre

## **8. Networking with other Organizations**

The Centre is depending on networking with other Organizations and individuals.  
**We are sincerely grateful to:**

- Katalamwa Cheshire Home: for the close cooperation in the process of medical rehabilitation of our clients
- CBM-Christoffel Blinden Mission: for operating our children free of charge and the good cooperation
- Mengo-Hospital
- Mulago-Hospital
- Ministry of Health: for support in PHC and medical services
- Ministry of Gender: for the good cooperation
- Health sector of Mubende District/Mityana District
- Liliane Foundation Holland, for supporting children, appliances, schooling, vocational training and resettlement tools
- Neukirchener Mission: for financial support, prayers and management
- GMMT( German Medical Missionary Team) for the great cooperation
- Church of Uganda: for good cooperation with Mityana Diocese
- Don Angelo Corra and the Don Lorenzo for the donation
- All donors who support the NRC financially and with prayers

We also want to thank the Board in Uganda and in Germany for the cooperation and communication of this past year.

**THANK YOU VERY MUCH!!!!**