

Annual Review 2006 of Namutamba Rehabilitation Centre

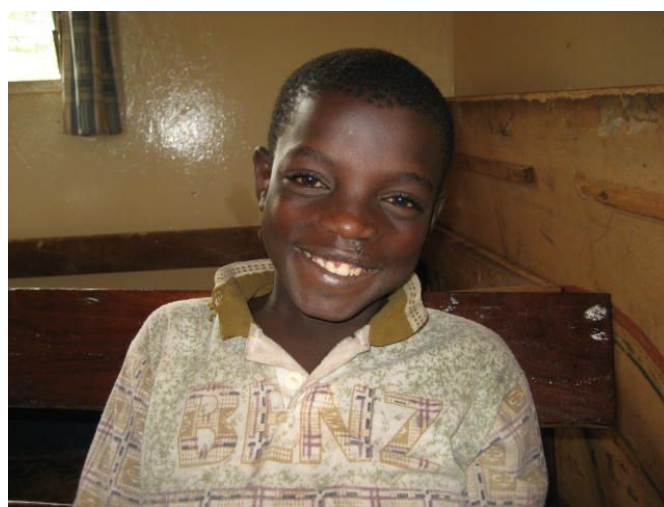


Table of Contents

1. Introduction

2. Structure of Namutamba RC

3. Reports from Departments

4. Highlights

5. Looking back on 2006

6. Goals for 2007

7. Finances

8. Networking with other Organizations

Abbreviations:

CBR - Community Based Rehabilitation

PWD - People with Disability

NRC - Namutamba Rehabilitation Centre

VM - Voluntary Mediator

MOH- Ministry of Health

1. Introduction

Namutamba Rehabilitation Centre (NRC) is providing services for children/ people with disabilities up to 25 years of age in Mityana Diocese (Kiboga, Mityana and Mubende District). It was opened in 1994. The RC is now working under the Church of Uganda with support from Neukirchener Mission (Germany).

Mission of the NRC

- *To provide medical rehabilitation while placing the Gospel of Jesus Christ as saviour at the centre of all services.*
- *The degree of rehabilitation shall be in accordance with the Ministry of Health and standards in Uganda.*
- *Services shall be provided to people of all communities, nationalities, religions and status without discrimination.*

Objectives of the NRC

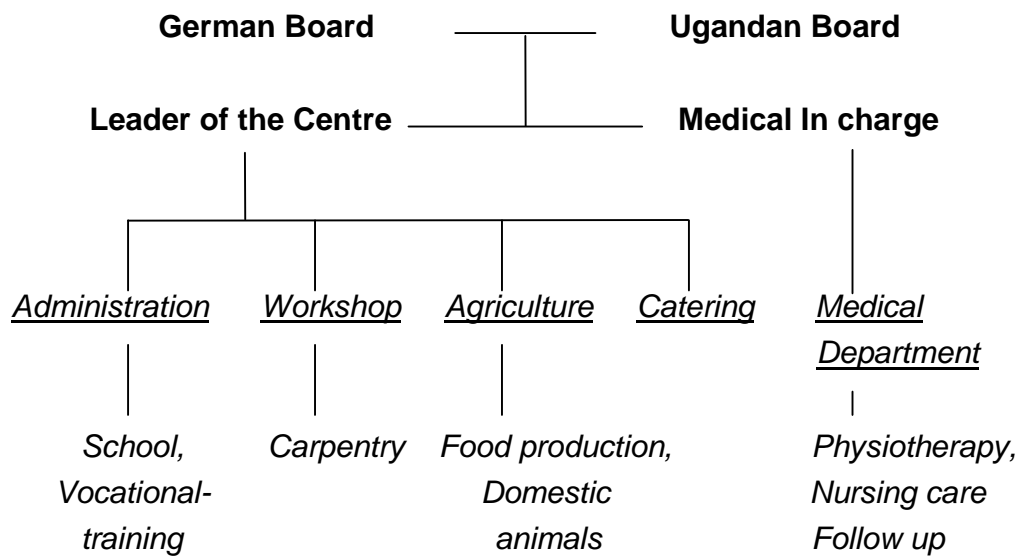
- *To provide medical rehabilitation and therapeutic gears to children with disabilities.*
- *To involve the parents in the rehabilitation process.*
- *To create awareness and responsibility in communities in regard to PWD's.*

Following Services are offered

- *Admission of children with Polio, Cerebral Palsy, Congenital deformities, Osteomyelitis, Cleft lips, Hydrocephalus, Post burn contractures, Drop foot and other disabilities*
- *Counselling*
- *Taking children to hospitals and specialists and if needed for operations*
- *Provision and production of therapeutic gears*
- *Pre- and postoperative care (dressings) and Physiotherapy*
- *Distribution of Epilepsy drugs*
- *Informal school activities*
- *Sending PWD's for vocational training*
- *Fieldwork: follow up and home visits, community awareness, identifying PWD's, training of VM's, regular Outreach clinics*



2. Structure of Namutamba RC



3. Report from Departments

3.1 Administration

- 13 employed staff, supported by 2 medical staff from Germany
- Staff development:
 - 3 employees completed the course of “The Uganda Clubfoot project”
 - Employment of a Physiotherapist
 - PWD’s were considered first in recruitment of staff
- Training of 5 PWD’s in tailoring and carpentry at Kireka Rehabilitation Centre and Dickson’s tailoring school
- New office equipment
- Improvement on rehabilitation facilities, children’s and staff rooms

Challenges:

- Increasing costs of living in Uganda
- NRC is depending on donations from Europe
- Transport is becoming costly
- 2nd floor (office) is not yet accessible for PWD’s

3.2 Medical Department

Achievements:

- Internal training for medical staff
- Further training for Physiotherapy Assistant
- 3 staff members joined the course for clubfoot treatment
- The number of children rehabilitated/ operated has increased, while the admission period has been reduced
- Government support for medical services (Pull and Push)
- Effective treatment due to continuous provision of medicine
- Availability of a community room for Outreach Clinics
- New sterilisation equipment in the dressing room
- New exercise equipment in the physiotherapy room
- Employment of a Physiotherapist
- Employment of PWD to help in the medical department

Challenges:

- Transport of clients
- Increasing number of clients with post injection nerve damage

Number of clients for rehabilitation 2004- 2006

Average	2004	2005	2006
Inpatients	35	30	29
Attendants	12	9	8
Outpatients monthly	203	229	223
Outpatients annual	2436	2746	2676
Operations	86	130	166
New clients	655	599	529
Vocational training	10	14	5

Number of new assessed clients treated in 2004- 2006

Type of disability	2004	2005	2006
CP(Cerebral Palsy)	91	96	80
Epilepsy	236	201	204
Osteomyelitis	25	41	35
Cleft lip, Cleft palate	14	12	15
Clubfoot	41	22	17
Post Burn Contracture		14	8
Others	260	225	218
Total	667	611	577

Epilepsy Programme

- *Namutamba RC is running a programme for clients with epilepsy.*
- *Main goals are:*
 - *Education about the disease (for clients, communities, schools)*
 - *Provision of anti-epileptic medicine*
 - *Monitoring clients on long- term basis*

Number of Clients on anti-epileptic drugs

	2005	2006
Namutamba	62	46
Kassanda	88	94
Kiganda	111	82
Zigotti	32	34
Kyakatebbe/ Kakungube	65	55
Maanyi	45	54

- *Regular Epilepsy-Clinics are held every Friday at Namutamba RC.*
- *Outreach Clinics are held every 8 weeks in; Kakungube, Kyakatebbe, Kassanda, Kiganda, Maanyi.*
- *Clients are requested to pay a fee of 1500 Ush (medicine for 2 months)*
- *Mityana District is supporting the Outreach Clinics in providing professional assistance (Psychiatric Nurse).*
- *Voluntary Mediators are mobilising for the Outreach Clinics and educating the communities.*
- *We thank the MOH and Mubende District/ Mityana District for providing Primary Health Care funds, which enabled the Centre to cover partly the expenditures for the Epilepsy programme.*

3.3 Fieldwork and Follow up

Fieldwork is supporting following targets of the Centre:

To provide rehabilitation services to PWD's in 2 Districts

- *Outreaches*
- *Follow up programme for discharged clients*
- *VM's training and supervision (41 VM's are trained)*

To provide CBR in Mityana District

- *Awareness rising in schools and communities*
- *Organising community meetings to focus on needs of PWD's*
- *Teaching community leaders and parents*

	2005	2006
No. of clients seen by the Field Coordinator	42	63
No. of home visits	19	30
VM supervision	18	40
Health Education Teaching	8	59
Health Centre visits	9	57
School visitations for Health education	14	18
Community Meetings	20	44

Achievements:

- All VM's were visited and supervised at their homes
- 2 Refresher Courses took place
- Training of new VM's
- Raising awareness at Health Centres in regard to Drop foot and giving out flyers

Challenges :

- the Motorcycle wasn't reliable (many technical challenges)
- large area to cover
- some clients move their homes and are difficult to find
- the VM's at outreach places are still in need of further training

3.4 Workshop**Goals:**

- to provide adequate therapeutic gear for the Centre (crutches, walking frames, toilet seats, CP-chairs)
- to teach young people with disabilities skills in carpentry
- to supply the community with products, as ordered (coffins, tables, beds, doors, windows and others)

Income / Expenditure:

The Salaries for the Carpenters and electricity is included in the expenditures!

Average	Income	Expenditure
Monthly	232.033/=	369.200/=
Annual	2.784.400/=	4.430. 400/=

The construction of the external workshop which was built under the supervision of Martin Aldinger was opened in August 2006.

Challenges:

- less orders from the community
- needs much financial support from NRC



3.5 Agriculture Department

We grow maize, sweet potatoes, matoke and different types of fruits (pineapples, bananas, passion fruits,...).



Attendants and older PWD's are actively involved in gardening.

3.6 Education

All children have the opportunity to go to school while they are on rehabilitation at the Centre. There are classes in the morning and afternoon lessons as well. All children are involved in home management and general cleaning.

The goal is to integrate PWD's in all activities of daily living.

It has been a challenge to our Nursery Teacher to teach different age groups of children at the same time.

The RC was able to buy a permanent black Board and add on more Textbooks for the children.



4. Highlights of 2006

- *3 Volunteer Mediator Courses took place in January.*
- *The RC employed a Physiotherapist.*
- *Mr. Siegfried Schnabel and his wife Johanna (Director of the Neukirchener Mission) visited the Centre in August.*
- *NRC arranged an Information Day for all Health Units of District Mityana.*
- *We built a new Carpentry and inaugurated it.*



- *The electricity of the whole Center, our Carpentry and our staff house was renewed.*
- *The three main buildings are fenced*
- *Our former Carpentry is changed into a dormitory*



Special Thanks to Don Angelo Corra (Italia) for supporting the renovation and sponsoring 5 beds!

- *NRC got Anti- Epileptic drugs from Butabika Hospital*

5. looking back on 2006

Our achieved goals of last year:

1. *To put more emphasis on CBR-activities*
 - *providing bicycles for 2 VM's*
 - *supervision of VM's and refresher courses*
2. *To continue staff development*
3. *To employ trained medical staff*
4. *To ensure the provision of anti-epileptic drugs*
5. *To extend networking with other organizations*
6. *To complete the construction of the workshop in a favorable environment*
7. *Awareness rising about post injection damages*

Still in progress:

To provide an accessible office for PWD's

6. Goals for 2007

1. *to provide an accessible office for PWD's*
2. *shifting and renovation of the Physiotherapy room and a room to admit our clients*
3. *to provide an accessible room for the night matron*
4. *to create more storage for medication and cleaning utility*
5. *mending the roof of the main building*
6. *to connect and optimize the water system*
7. *roofing of the playground*
8. *further training for our medical staff*
9. *language training for German staffs*
10. *attending a management course for the leader of NRC*

7. Finances

Balance Sheet 2006

Month	Income in Ush	Expenditure in Ush
<i>January</i>	7.762.000	6.256.205
<i>February</i>	3.728.000	8.215.300
<i>March</i>	16.563.100	12.735.000
<i>April</i>	4.413.600	6.037.200
<i>May</i>	10.796.100	7.271.800
<i>June</i>	6.969.800	10.156.100
<i>July</i>	10.153.250	9.442.100
<i>August</i>	9.179.100	7.290.600
<i>September</i>	7.667.300	8.722.100
<i>October</i>	15.395.240	13.921.350
<i>November</i>	7.793.000	8.663.650
<i>December</i>	3.427.500	4.446.700
Total	103.848.690	103.158.105

Budget 2007

Expenditures	monthly in Ush	annually in Ush
<i>Costs of living/ food</i>	1,900,000	22,800,000
<i>Transport</i>	1,250,000	15,000,000
<i>Administration</i>	300,000	3,600,000
<i>Staff Costs</i>	2,000,000	24,000,000
<i>Maintenance</i>	580,000	6,960,000
<i>Medical Costs</i>	1,200,000	14,400,000
<i>Appliances and Operations (SLF)</i>	1,150,000	13,800,000
<i>Fieldwork and Follow up</i>	400,000	4,800,000
<i>Workshops</i>	300,000	3,600,000
<i>Agriculture</i>	200,000	2,400,000
<i>Staff development</i>	100,000	1,200,000
<i>Others</i>	200,000	2,400,000
Total	9,580,000	114,960,000
Expected Income:	monthly in Ush	annually in Ush
<i>Neukirchener Mission Germany</i>	4,500,000	54,000,000
<i>SLF</i>		15,000,000
<i>PHC Mityana District</i>		9,000,000
<i>Pull and Push</i>		2,100,000
<i>Workshop</i>		800,000
<i>Parent Contribution</i>		4,500,000
Total Expected Income:		85,400,000

Namutamba RC is a non-governmental and non-profit making organisation and relies on donations.

We appreciate any contribution in supporting the work of the Centre.

Bank Account at Stanbic Bank Ltd:

Account–No: 0121 064 259 901
Branch: Stanbic Bank of Uganda Limited,
Kampala Road, Kampala
Name: Namutamba Rehabilitation Centre

8. Networking with other Organizations

The Centre is depending on networking with other Organizations and individuals.

We are sincerely grateful to:

- *Katalemwa Cheshire Home (CBM-Christoffel Blinden Mission): for the close cooperation in the process of medical rehabilitation of our clients*
- *Mengo-Hospital*
- *Mulago-Hospital*
- *Ministry of Health: for support in PHC and medical services*
- *Ministry of Gender: for the good cooperation*
- *Health sector of Mubende District/Mityana District*
- *Liliane Foundation Holland, for supporting children for operations, appliances, schooling, vocational training and resettlement tools*
- *Neukirchener Mission: for financial support, prayers and management*
- *GMMT(German Medical Missionary Team) for professional staff and financial support*
- *“Hilfe Direkt” Germany: for Physiotherapy equipment and 2 bicycles for Voluntary Mediators*
- *Church of Uganda: for good cooperation with Mityana Diocese*
- *Uganda Clubfoot Project: for training medical staff*
- *Butabika Hospital for supporting our clients with Anti Epilepsy drugs*

We also want to thank the Board in Uganda and in Germany for the cooperation and communication of this past year.

THANK YOU VERY MUCH!!!!